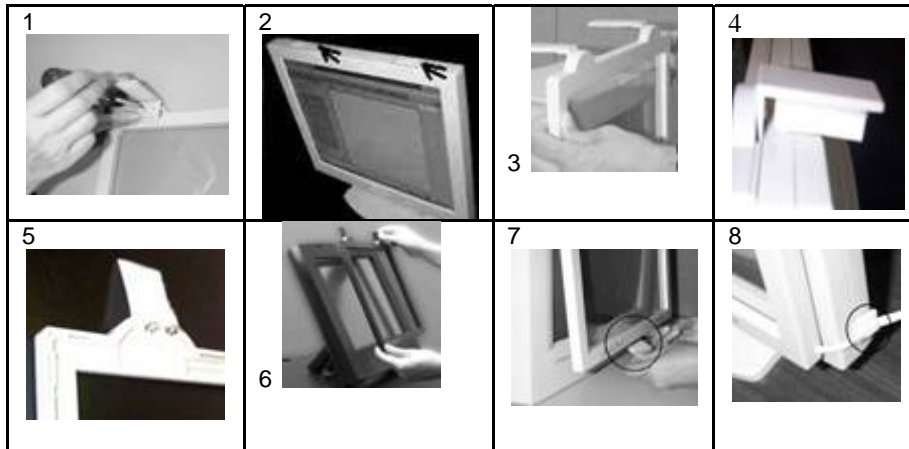


1. For Mounting on LCD monitor: There are two sets of hangers included; one pair of plastic hangers and one pair of Velcro hangers.



1.1. You may use the plastic hangers. Place the touch screen panel on a flat table with the backside facing up. Screw two hangers into the back of the panel using the top screw holes on the hanger (picture 1).

1.2. Adhere two Velcro straps provided on the top of the display as indicated by the arrows in picture 2.

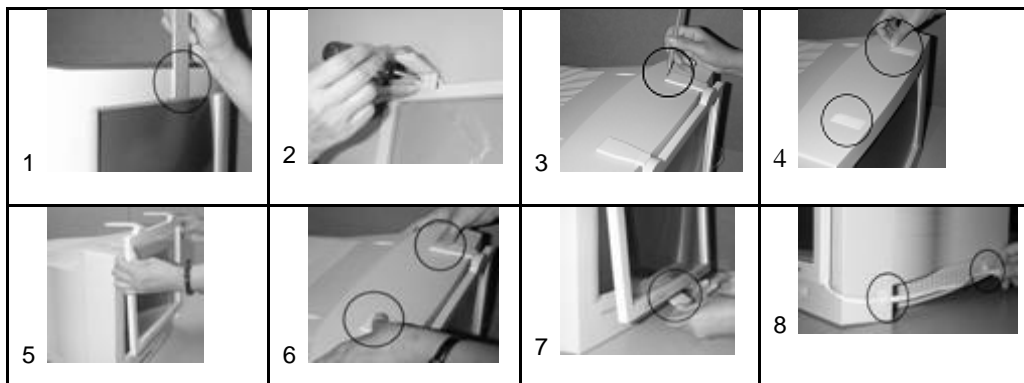
1.3. Mount the touch screen to the display (picture 3).

1.4. If you find the top of the touch screen is blocking the view area of the display; you may raise the touch screen by adding the rectangular foam pad underneath the hangers (picture 4).

1.5. Alternatively, you may use the Velcro hangers (picture 5). The soft surface of the Velcro faces up when fastening them with the screws to the frame. Mount the touch screen to the display and press the Velcro firmly (picture 6).

1.6. You must also apply the Velcro at the bottom of the screen (picture 7) to secure the mounting. Use the cable clips provided to secure and organize the touch screen cable (picture 8).

2. For mounting on CRT monitor:



- 2.1.** Measure the top frame of the monitor (picture 1). If it is 1.5 inches (3.8 cm) or less, use the top holes on the plastic hangers to screw into the touch screen panel. Otherwise, use the bottom holes.
- 2.2.** Place the touch screen panel on a flat table with the backside facing up. Screw two hangers into the back of the panel (picture 2).
- 2.3.** Hang the touch screen onto the monitor in center position. Use a pencil to mark the hangers' position on top of the monitor (picture 3).
- 2.4.** Remove the touch screen from the monitor. Adhere two pieces of Velcro straps (provided) onto the top of the monitor near the pencil marks (picture 4).
- 2.5.** Mount the touch screen panel as close to the monitor as possible with the hangers aligned to the Velcro strips (picture 5).
- 2.6.** Press down the hangers firmly to fasten the Velcro strips (picture 6).
- 2.7.** Adhere the Velcro at the bottom center of the screen (picture 7).
- 2.8.** Adhere the 3 cable clips to the side of the monitor to organize and secure the cable. This can also prevent the screen from dropping down to the ground directly if it gets knocked off of the monitor (picture 8).

IT IS VERY IMPORTANT TO FOLLOW THE ABOVE PROCEDURES TO AVOID ACCIDENTAL DAMAGE TO THE PRODUCT.